

OR SELECTIVELY PLUGGED AS SHOWN

9 PIPE

8A PIPE
SOFT GOODS PIPE
8 PIPE
7 PIPE
6 PIPE

5 PIPE

4 PIPE

3 PIPE

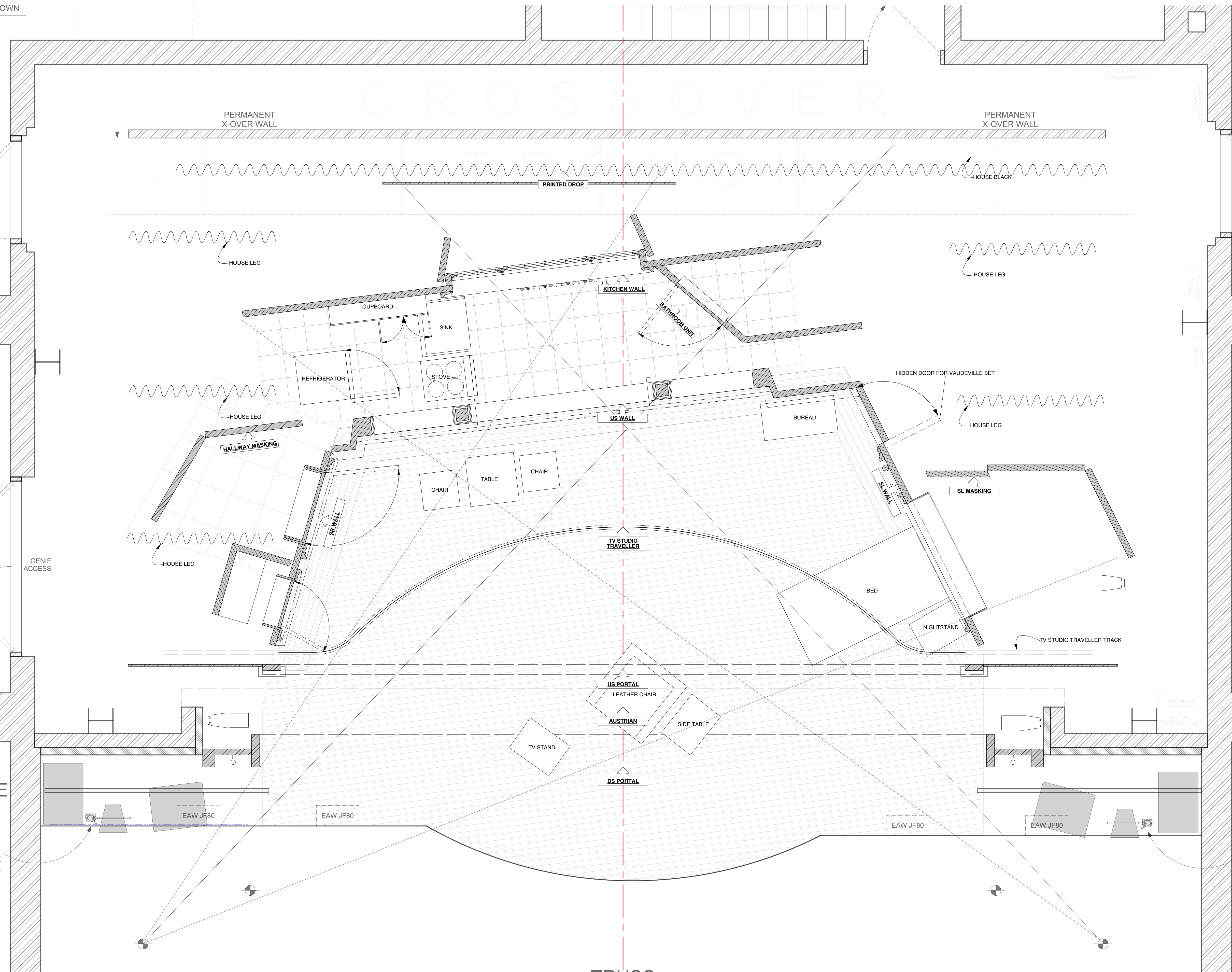
2 PIPE

1 PIPE

SR APRON PIPE

SR APRON BOOM
SEE SECTION FOR
SPEAKER OBSTRUCTIONS

OX BOOM NEAR
(6) 24" SIDEARMS, 2'-0" SPACING



9 PIPE

8A PIPE
SOFT GOODS PIPE
8 PIPE
7 PIPE
6 PIPE

5 PIPE

4 PIPE

3 PIPE

2 PIPE

1 PIPE

SL APRON PIPE

SL APRON BOOM
SEE SECTION FOR
SPEAKER OBSTRUCTIONS

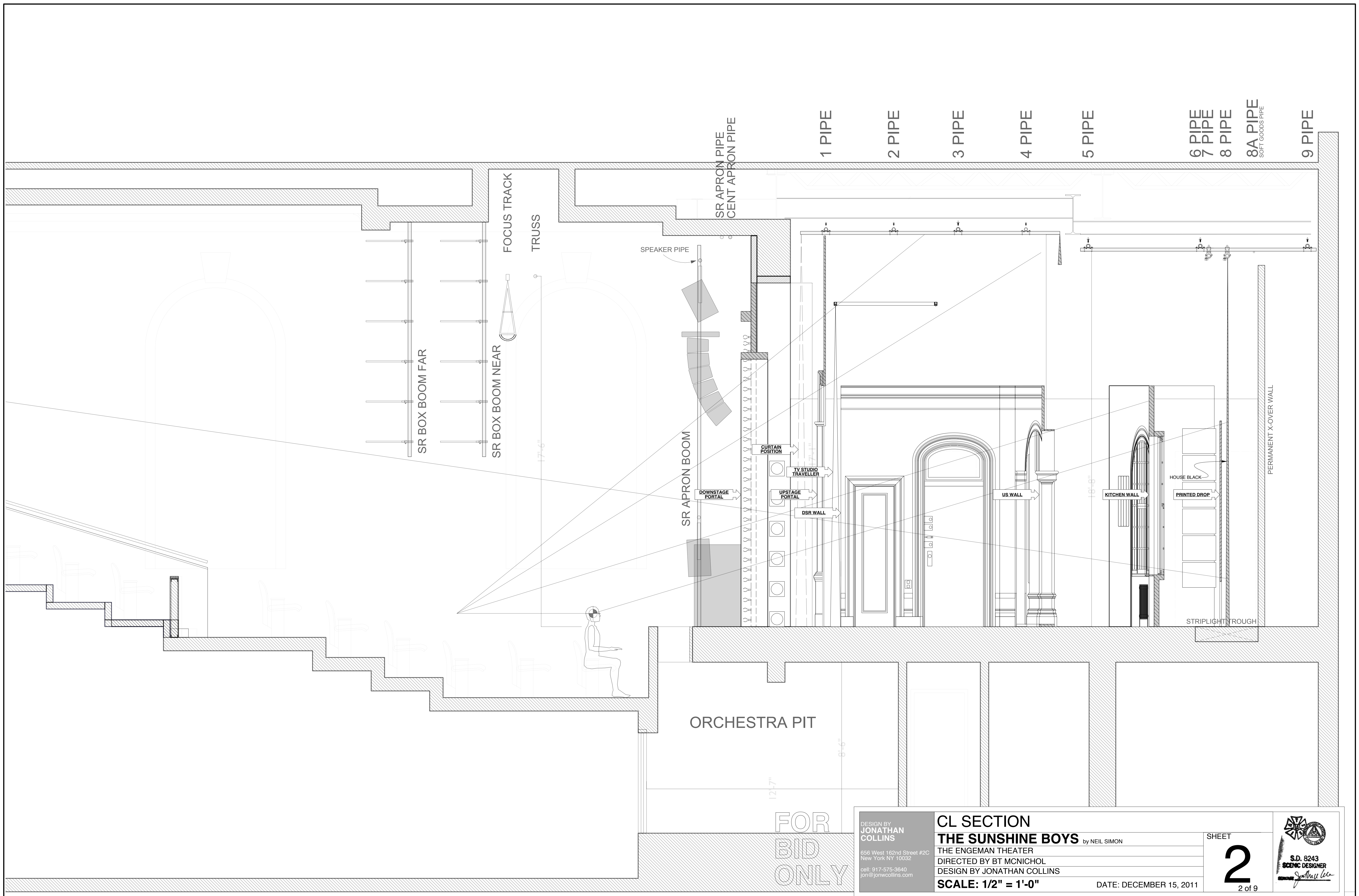
(6) 24" SIDEARMS, 2'-0" SPACING

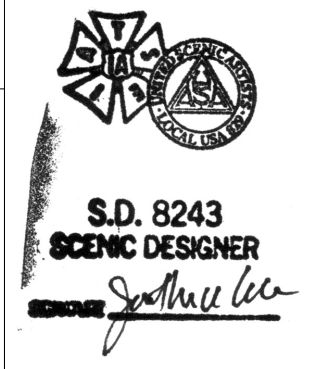
TRUSS
+17'-6" o/STAGE DECK

FOCUS TRACK
NOT A LIGHTING POSITION

FOR
BID
ONLY

DESIGN BY JONATHAN COLLINS 656 West 162nd Street #2C New York NY 10032 cell: 917-575-3640 jon@joncollins.com	GROUNDPLAN THE SUNSHINE BOYS by NEIL SIMON	SHEET 1 1 of 9		
	THE ENGEMAN THEATER DIRECTED BY BT MCNICHOL DESIGN BY JONATHAN COLLINS			
	SCALE: 1/2" = 1'-0"			DATE: DECEMBER 15, 2011
	(6) 24" SIDEARMS, 2'-0" SPACING			



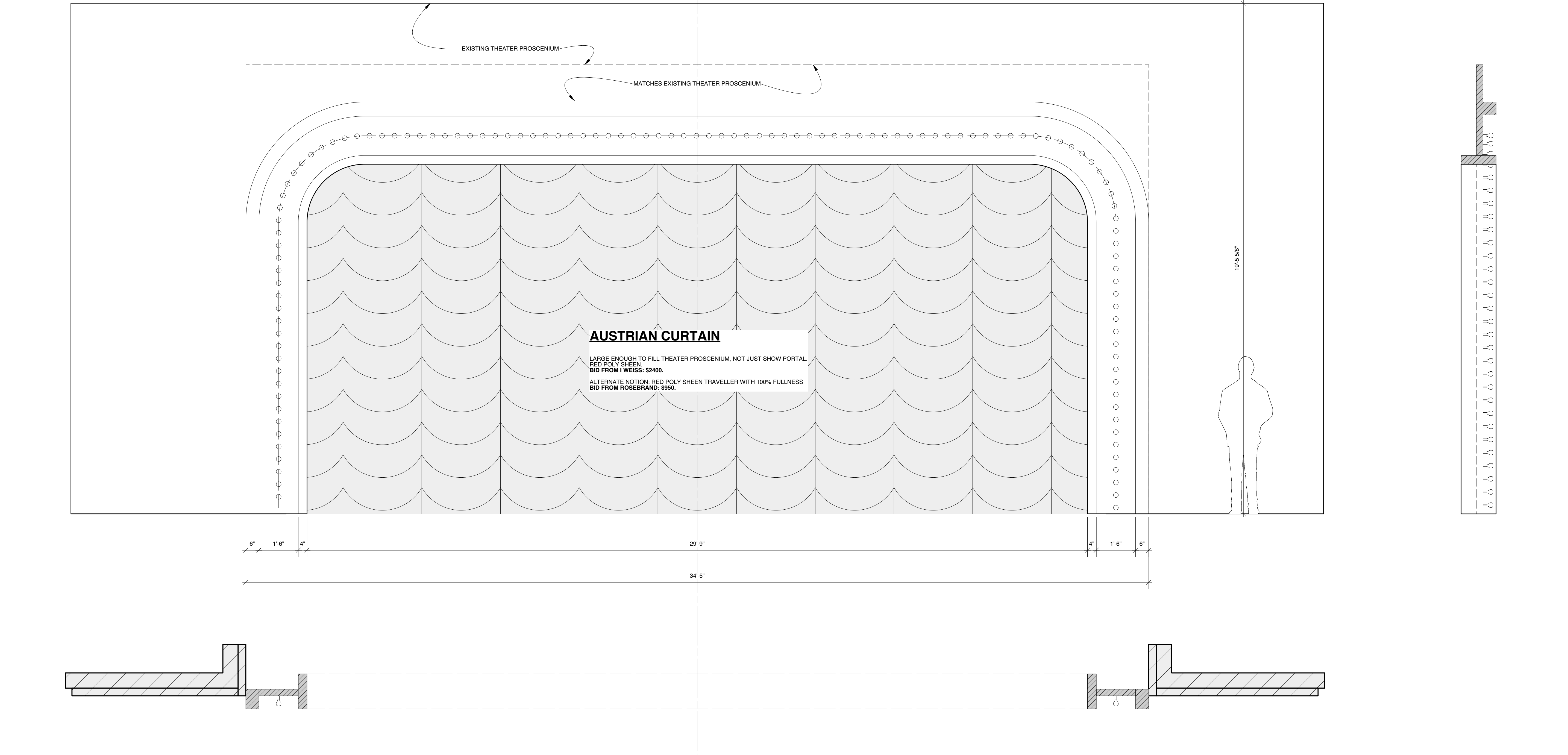
DESIGN BY JONATHAN COLLINS <small>656 West 162nd Street #2C New York NY 10032 cell: 917-575-3640 jon@joncollins.com</small>	CL SECTION THE SUNSHINE BOYS by NEIL SIMON	SHEET 2	
	THE ENGEMAN THEATER DIRECTED BY BT MCNICHOL DESIGN BY JONATHAN COLLINS	DATE: DECEMBER 15, 2011 2 of 9	
	SCALE: 1/2" = 1'-0"		

DS PORTAL

UNIT PLUGS INTO EXISTING THEATER PROSCENIUM.

LIGHTBULB BELT (CONFIRM WITH LD):
 ACTION LIGHTING.COM
 Item # 201BL-G6/20 x 3 UNITS
 \$120 TOTAL

120 EDISON LIGHTBULBS (CONFIRM WITH LD):
 \$60 TOTAL



AUSTRIAN CURTAIN

LARGE ENOUGH TO FILL THEATER PROSCENIUM, NOT JUST SHOW PORTAL.
 RED POLY SHEEN.
 BID FROM I WEISS: \$2400.
 ALTERNATE NOTION: RED POLY SHEEN TRAVELLER WITH 100% FULLNESS
 BID FROM ROSEBRAND: \$650.

FOR
 BID
 ONLY

DESIGN BY JONATHAN COLLINS 656 West 162nd Street #2C New York NY 10032 cell: 917-575-3640 jon@joncollins.com	DS PORTAL THE SUNSHINE BOYS by NEIL SIMON	SHEET 3 3 of 9	
	THE ENGEMAN THEATER DIRECTED BY BT MCNICHOL DESIGN BY JONATHAN COLLINS	DATE: DECEMBER 15, 2011	
	SCALE: 1/2" = 1'-0"		

DS PORTAL

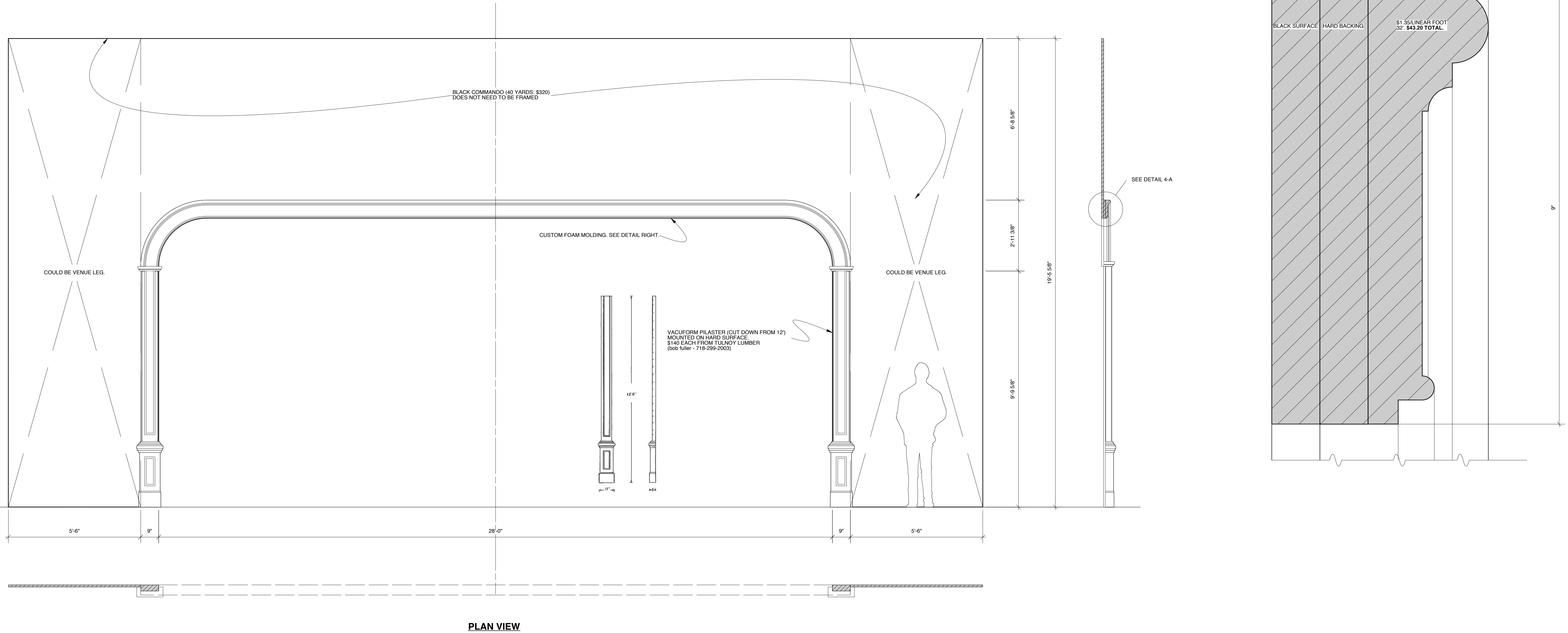
UNIT PLUGS INTO EXISTING THEATER PROSCENIUM.

LIGHTBULB BELT (CONFIRM WITH LD):
ACTION LIGHTING CO
Item # 201BL-G6/20 x 3 UNITS
\$120 TOTAL

120 EDISON LIGHTBULBS (CONFIRM WITH LD):
\$60 TOTAL

CL SECTION

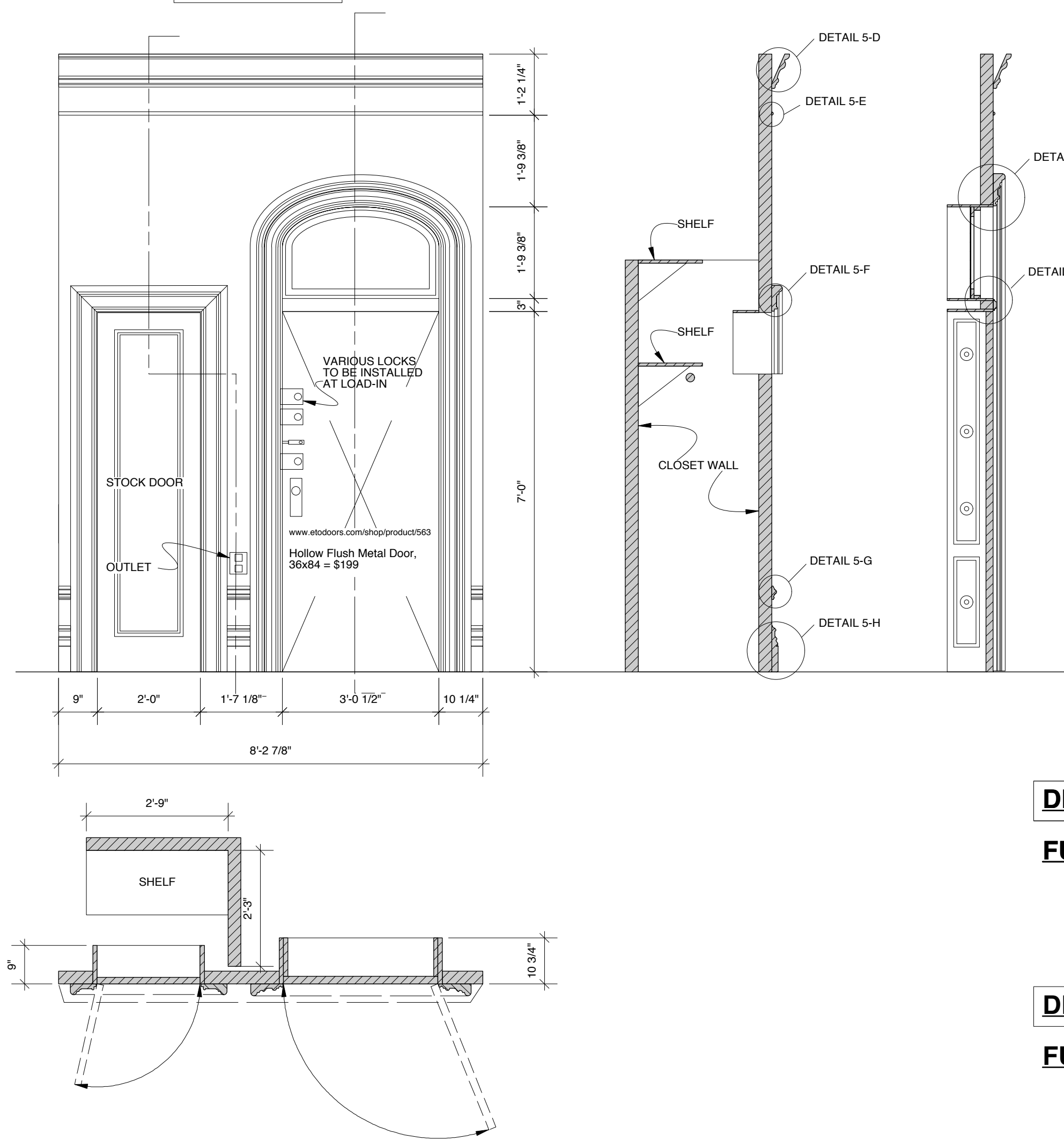
DETAIL 4-A



FOR
BID
ONLY

DESIGN BY JONATHAN COLLINS 656 West 162nd Street #2C New York NY 10032 cell: 917-575-3640 jon@joncollins.com	US PORTAL THE SUNSHINE BOYS by NEIL SIMON	SHEET 4 4 of 9	
	THE ENGEMAN THEATER DIRECTED BY BT MCNICHOL DESIGN BY JONATHAN COLLINS	DATE: DECEMBER 15, 2011	
	SCALE: 1/2" = 1'-0"		

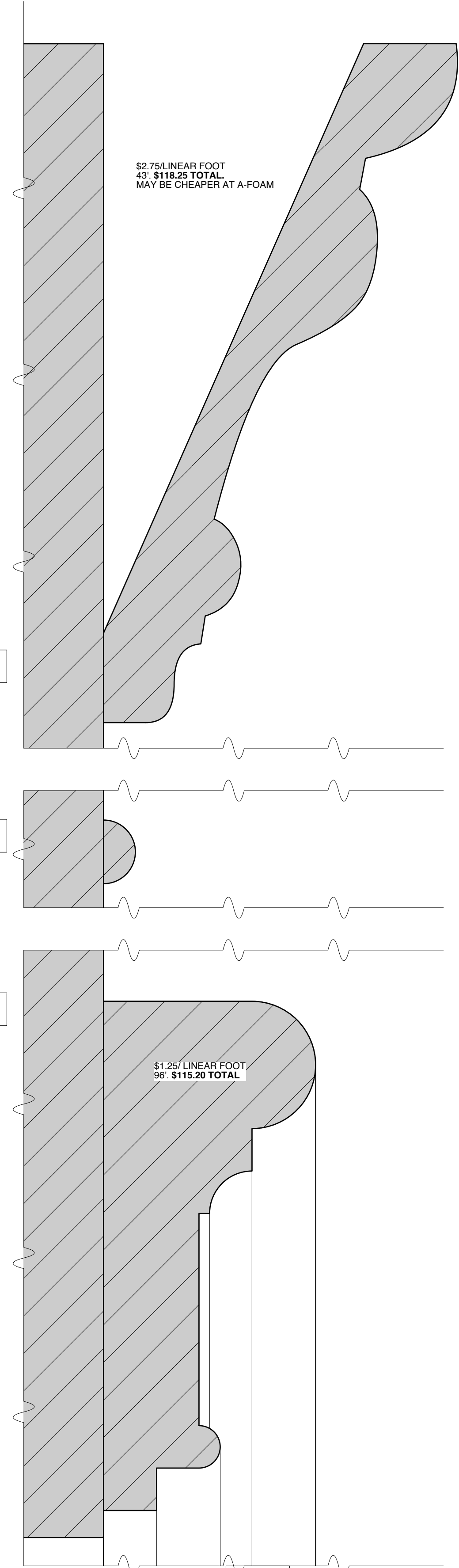
DSR WALL



DETAIL 5-D
FULL SCALE

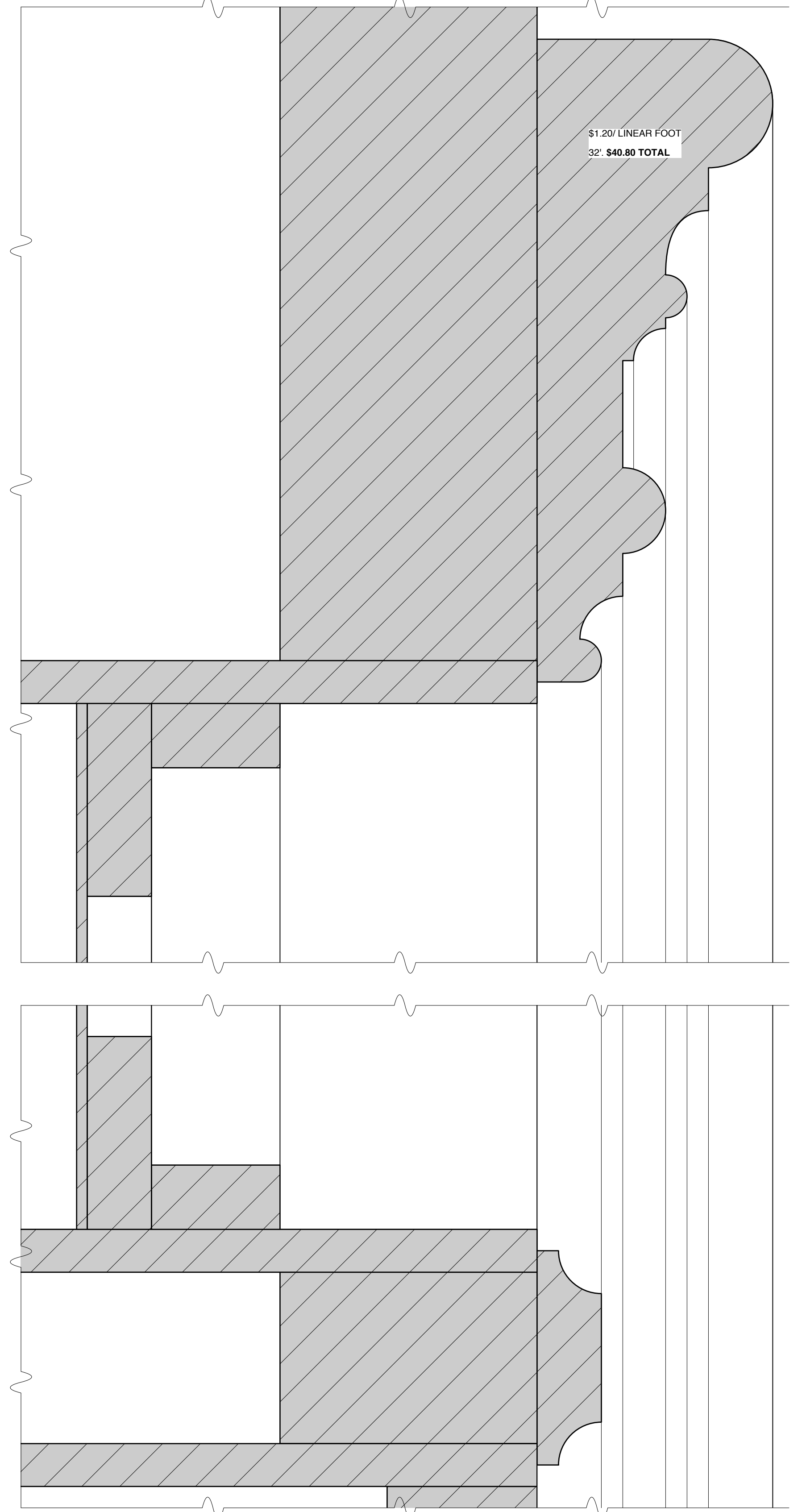
DETAIL 5-E
FULL SCALE

DETAIL 5-F
FULL SCALE



FOR
BID
ONLY

DETAIL 5-I
FULL SCALE



DETAIL 5-G
FULL SCALE

DETAIL 5-H
FULL SCALE

DETAIL 5-J
FULL SCALE

DESIGN BY JONATHAN COLLINS 656 West 162nd Street #2C New York NY 10032 cell: 917-575-3640 jon@joncollins.com	DSR WALL THE SUNSHINE BOYS by NEIL SIMON	SHEET 5 1 of 9	
	THE ENGEMAN THEATER DIRECTED BY BT MCNICHOL DESIGN BY JONATHAN COLLINS		
	SCALE: 1/2" = 1'-0"		
	DATE: DECEMBER 15, 2011		

US WALL

SURFACE: DECADES OF REPAINTING TEXTURE.
SOLID COLOR TBD WITH AGING PATINA.

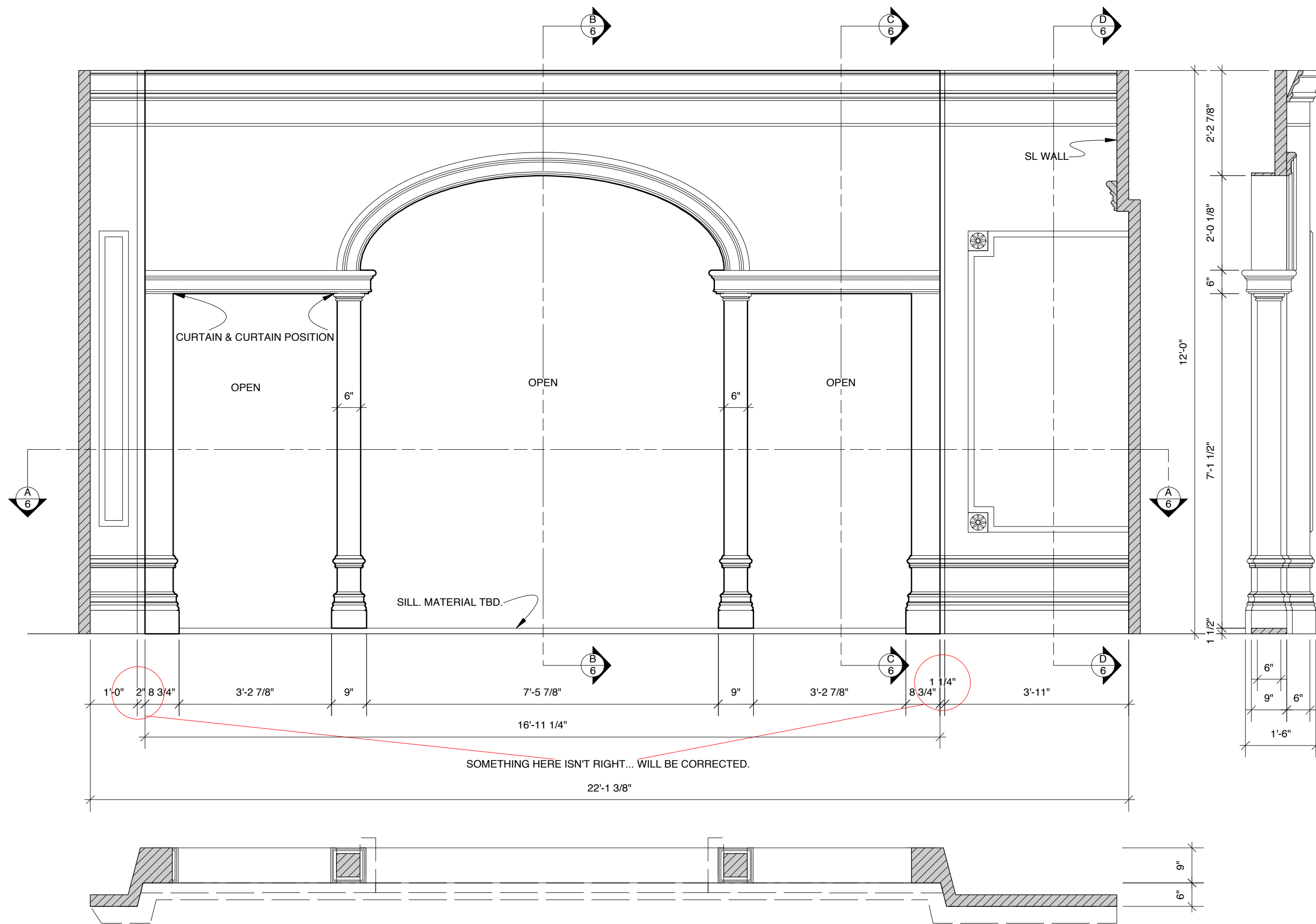
SECTION 6-B SECTION 6-C SECTION 6-D

SL WALL

SURFACE: DECADES OF REPAINTING TEXTURE.
SOLID COLOR TBD WITH AGING PATINA.

WINDOW DETAILS FORTHCOMING

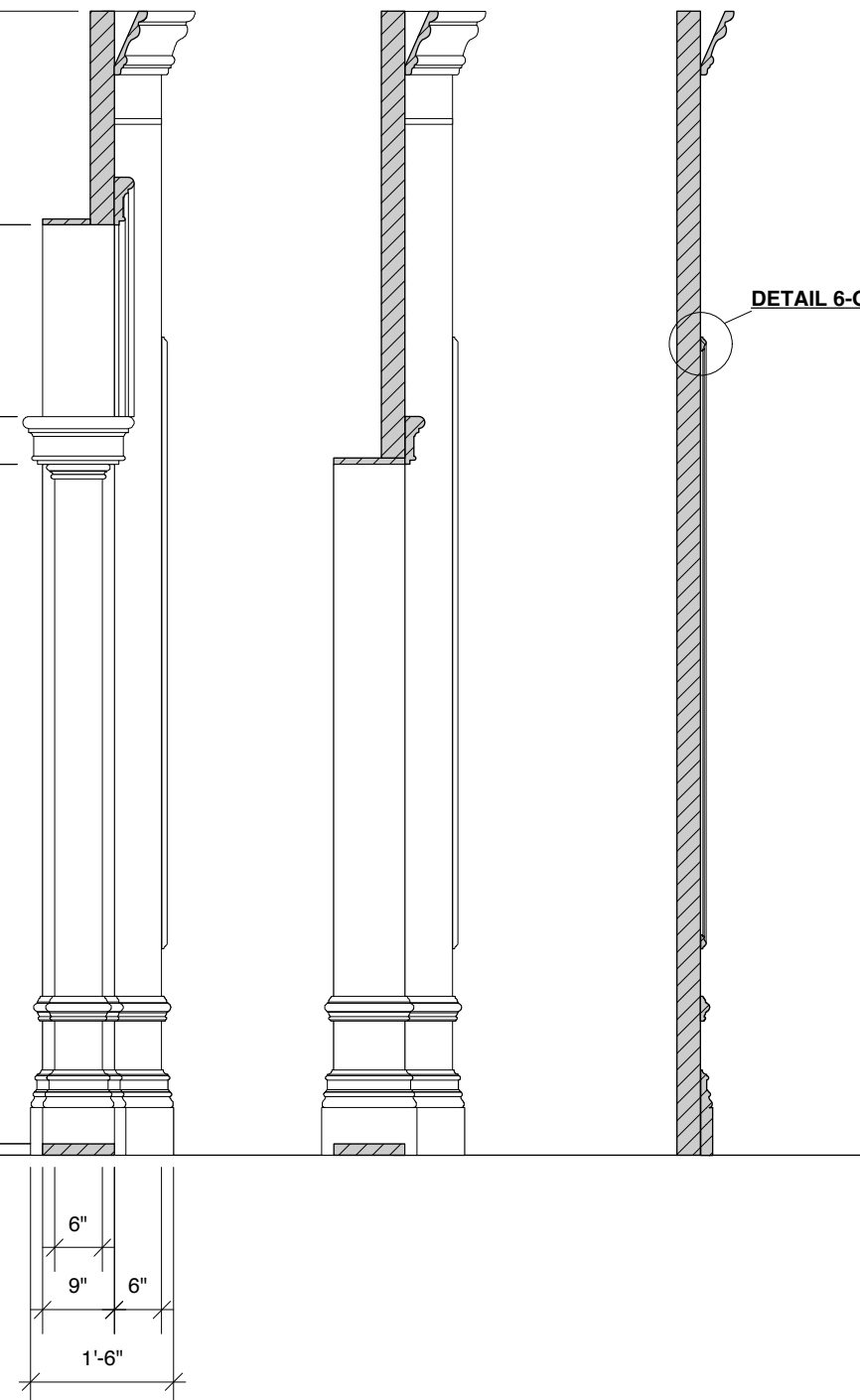
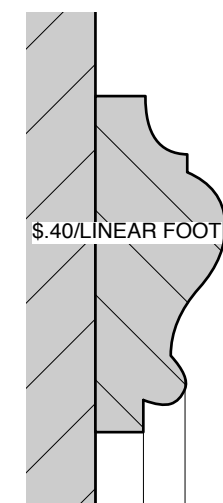
SECTION 6-F/SL MASKING



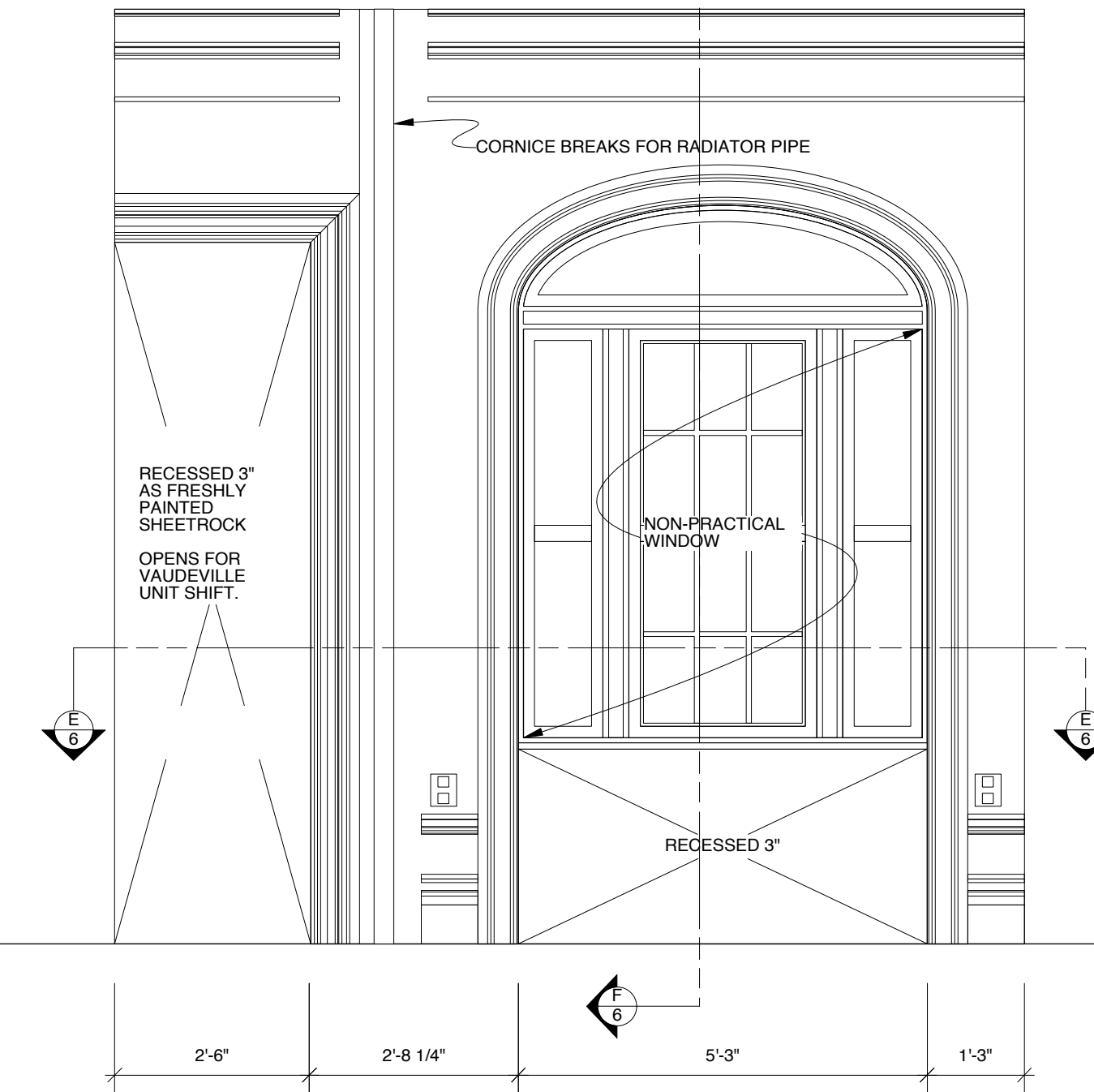
SECTION 6-A

DETAIL 6-G

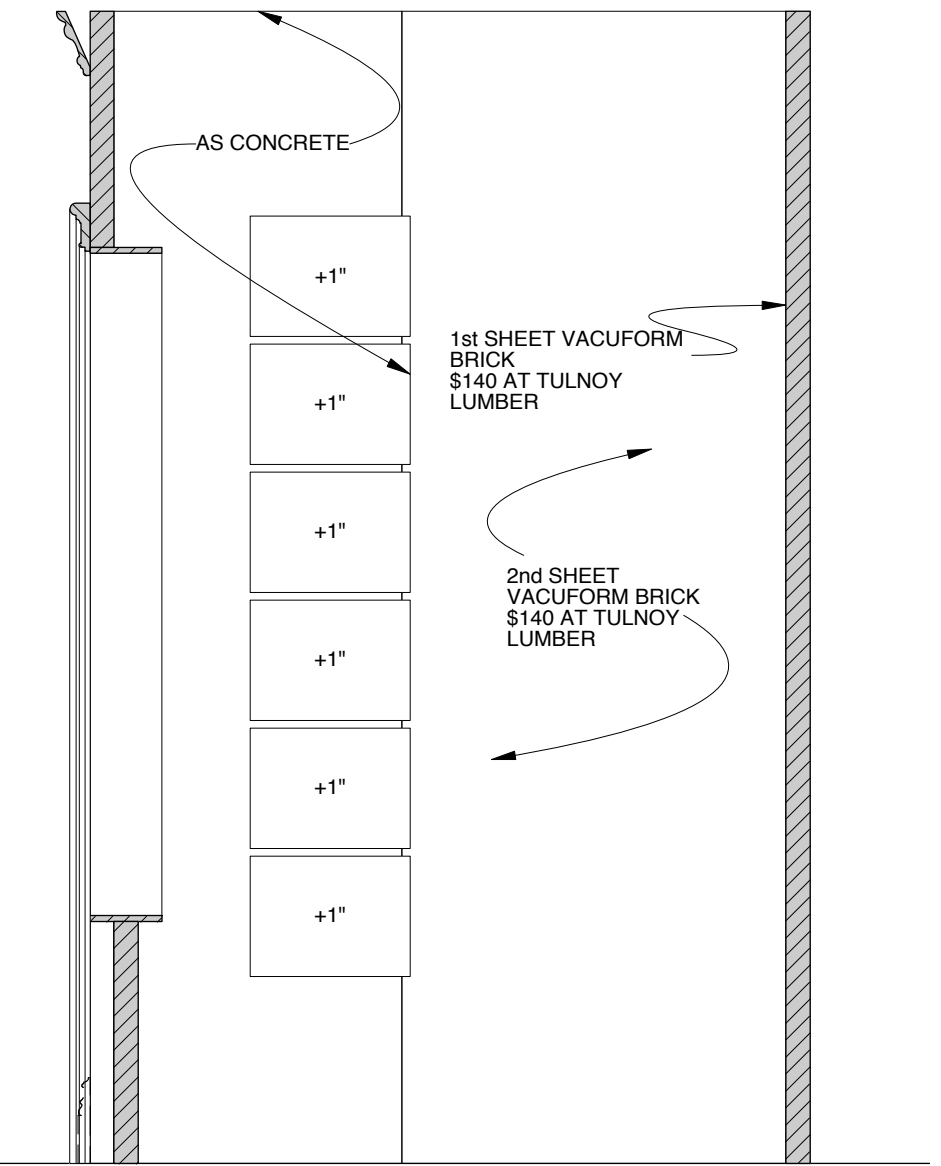
FULL SCALE



DETAIL 6-G



SECTION 6-E



FOR
BID
ONLY

DESIGN BY JONATHAN COLLINS 656 West 162nd Street #2C New York NY 10032 cell: 917-575-3640 jon@joncollins.com	US WALL, SL WALL, SL MASKING		SHEET <h1>6</h1> 6 of 9	
	THE SUNSHINE BOYS by NEIL SIMON			
	THE ENGEMAN THEATER DIRECTED BY BT MCNICHOL DESIGN BY JONATHAN COLLINS			
	SCALE: 1/2" = 1'-0" DATE: DECEMBER 15, 2011			

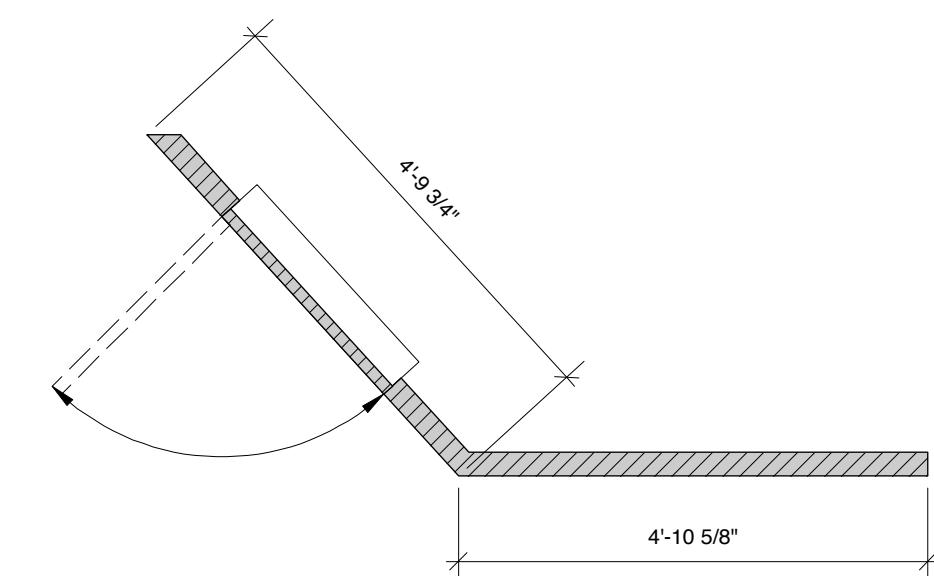
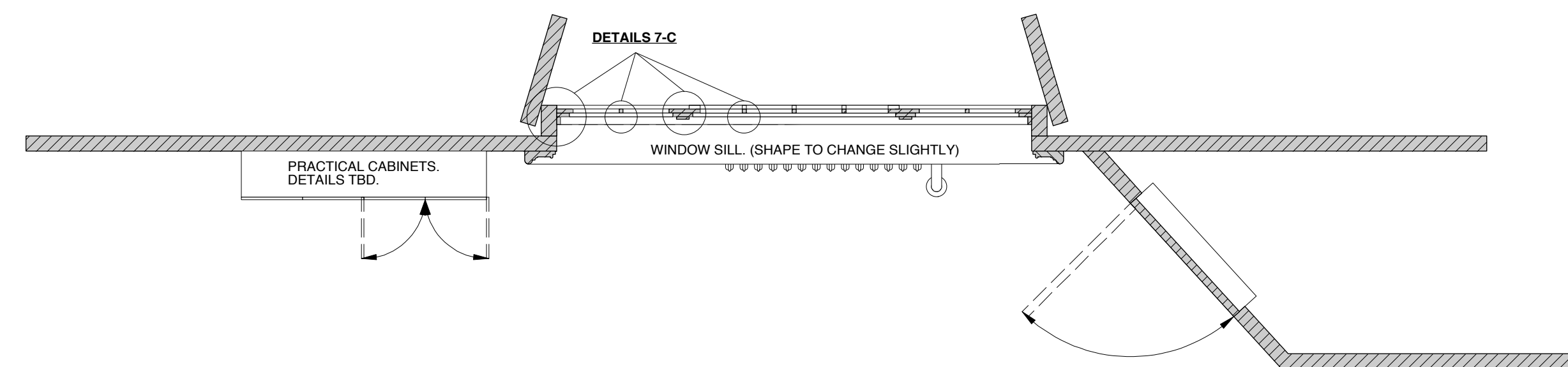
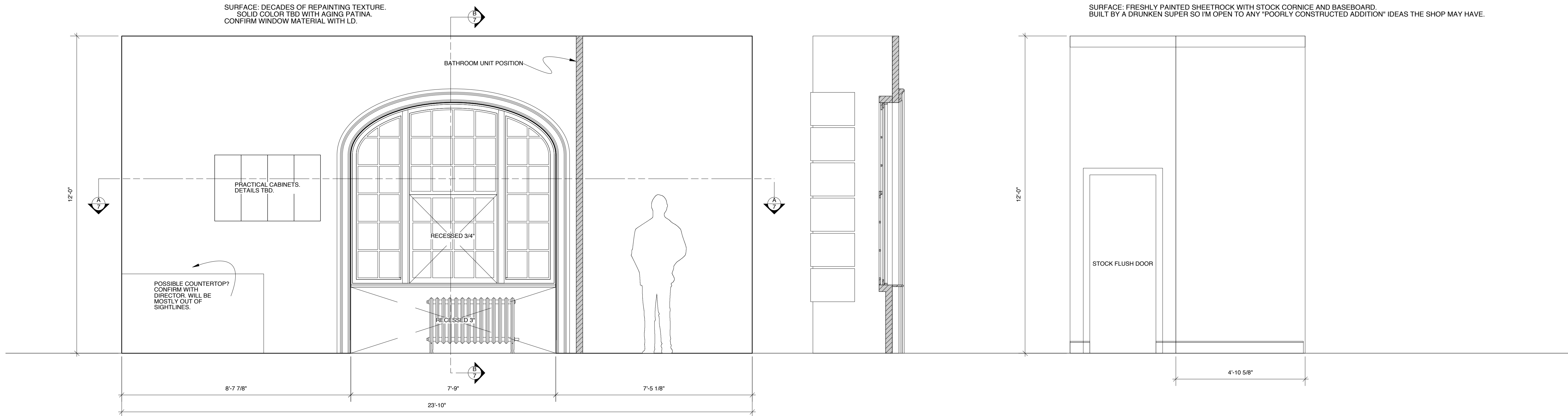
KITCHEN WALL

SURFACE: DECADES OF REPAINTING TEXTURE.
SOLID COLOR TBD WITH AGING PATINA.
CONFIRM WINDOW MATERIAL WITH LD.

SECTION 7-B

BATHROOM UNIT

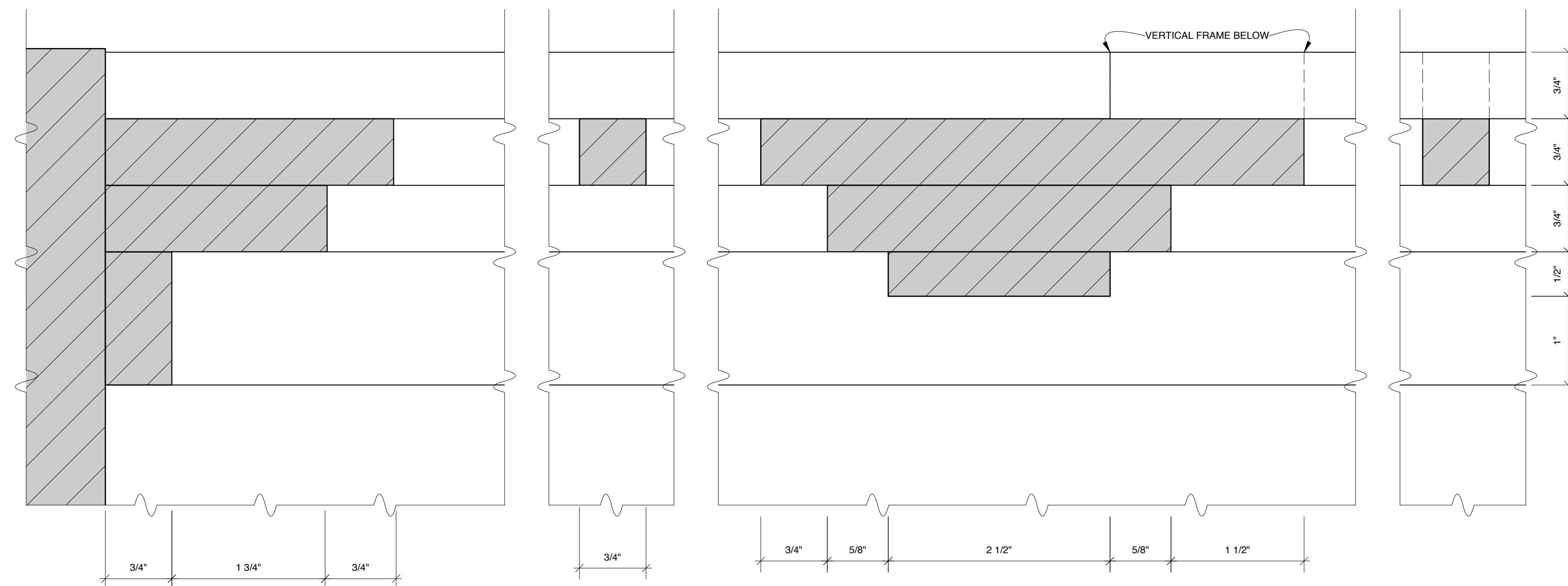
SURFACE: FRESHLY PAINTED SHEETROCK WITH STOCK CORNICE AND BASEBOARD.
BUILT BY A DRUNKEN SUPER SO I'M OPEN TO ANY "POORLY CONSTRUCTED ADDITION" IDEAS THE SHOP MAY HAVE.



SECTION 7-A

DETAILS 7-C

FULL SCALE



NOTE:

- THIS WINDOW IS FAR FROM THE AUDIENCE AND DOES NOT REQUIRE REAL MUNTONS AND MULLIONS.
- I AM CURIOUS WHAT IT WOULD COST TO LASER CUT THESE THREE LAYERS OUT OF SOME 3/4" or 1/2" MATERIAL AND JUST ADHERE THEM TOGETHER.
- SURFACE IS "DECADES OF PAINT" SO WE CAN GET AWAY WITH QUITE A FEW SHORTCUTS, I THINK.

FOR
BID
ONLY

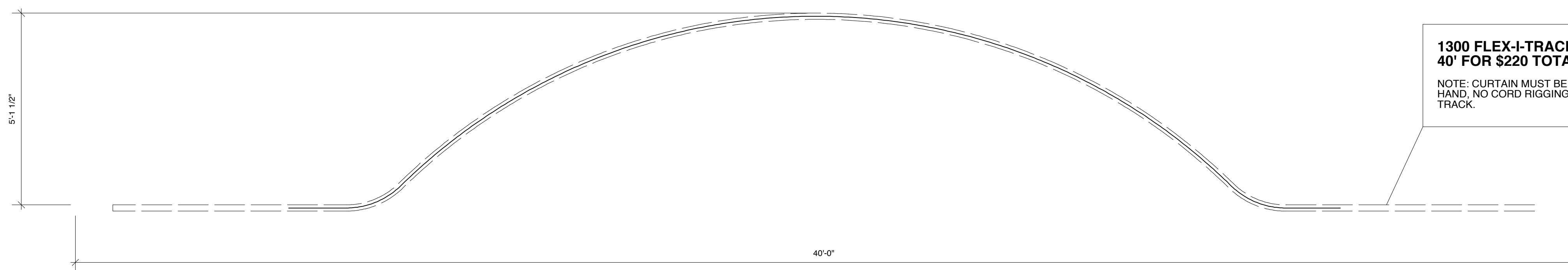
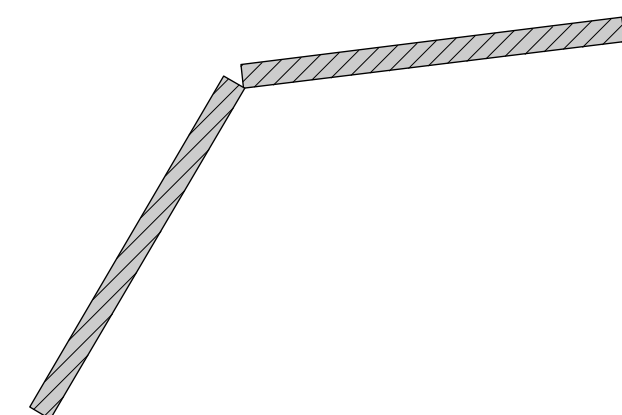
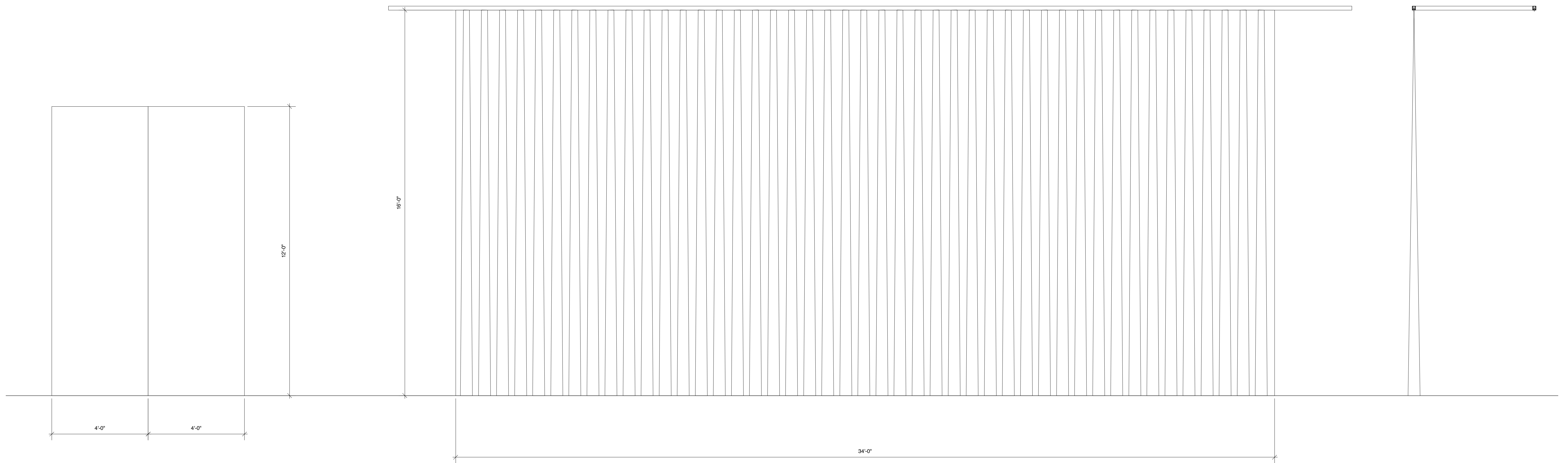
DESIGN BY JONATHAN COLLINS 656 West 162nd Street #2C New York NY 10032 cell: 917-575-3640 jon@joncollins.com	KITCHEN WALL AND BATHROOM UNIT			
	THE SUNSHINE BOYS by NEIL SIMON			SHEET
	THE ENGEMAN THEATER			7
	DIRECTED BY BT MCNICHOL DESIGN BY JONATHAN COLLINS			7 of 9
SCALE: 1/2" = 1'-0"		DATE: DECEMBER 15, 2011		

HALLWAY UNIT


TREATMENT TBD.

TV STUDIO TRAVELLER

BID FROM ROSEBRAND FOR FABRIC AND CONSTRUCTION, RIGGED TO TRACK: \$790
UNIT IS IN TWO PANELS AND MUST BE BROUGHT ON BY HAND.

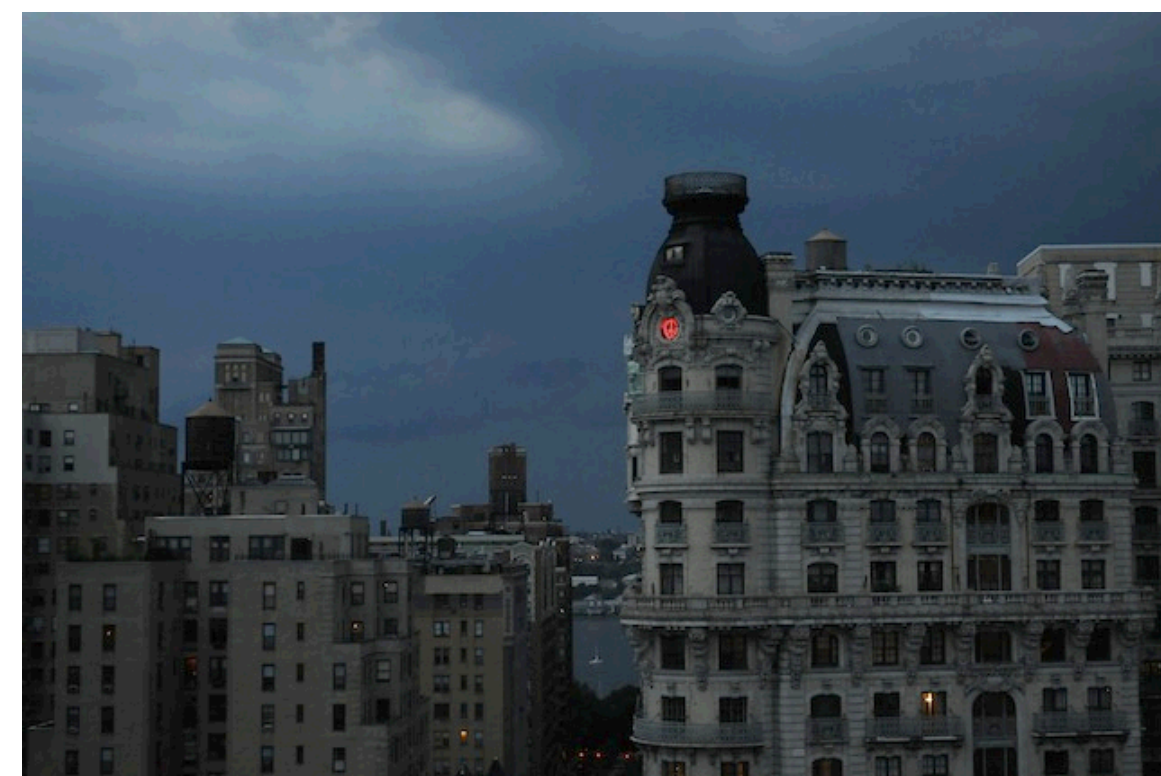


FOR
BID
ONLY

DESIGN BY JONATHAN COLLINS <small>656 West 162nd Street #2C New York NY 10032 cell: 917-575-3640 jon@joncollins.com</small>	HALLWAY UNIT, TV STUDIO TRAVELLER		 S.D. 8243 SCENIC DESIGNER <i>Jonathan Collins</i>	
	THE SUNSHINE BOYS by NEIL SIMON			SHEET
	THE ENGEMAN THEATER			8
	DIRECTED BY BT MCNICHOL			
DESIGN BY JONATHAN COLLINS		8 of 9		
SCALE: 1/2" = 1'-0"		DATE: DECEMBER 15, 2011		

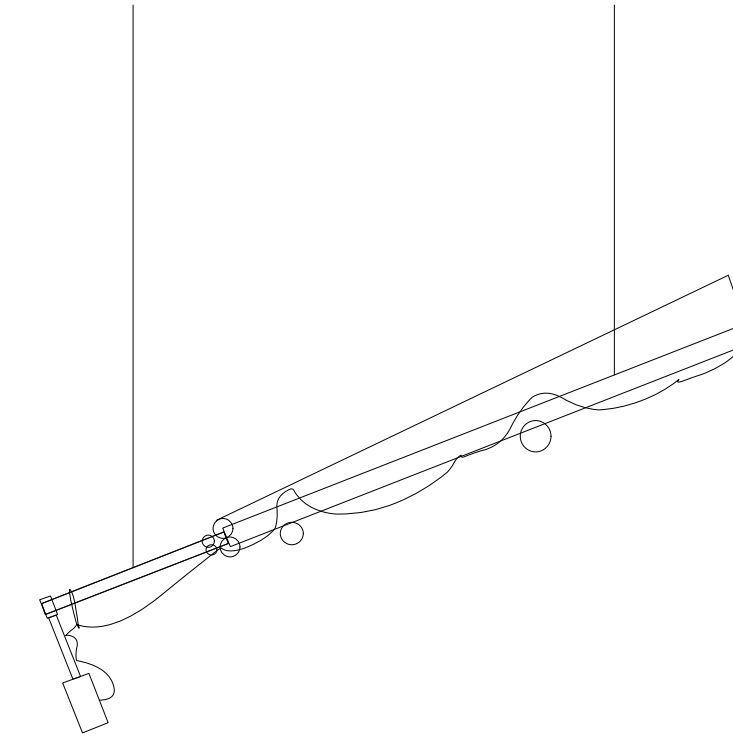
PRINTED DROP

VERTICAL SIGHTLINES TBD. DROP COULD BE SMALLER.



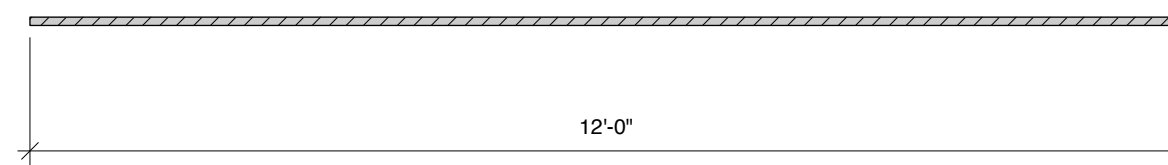
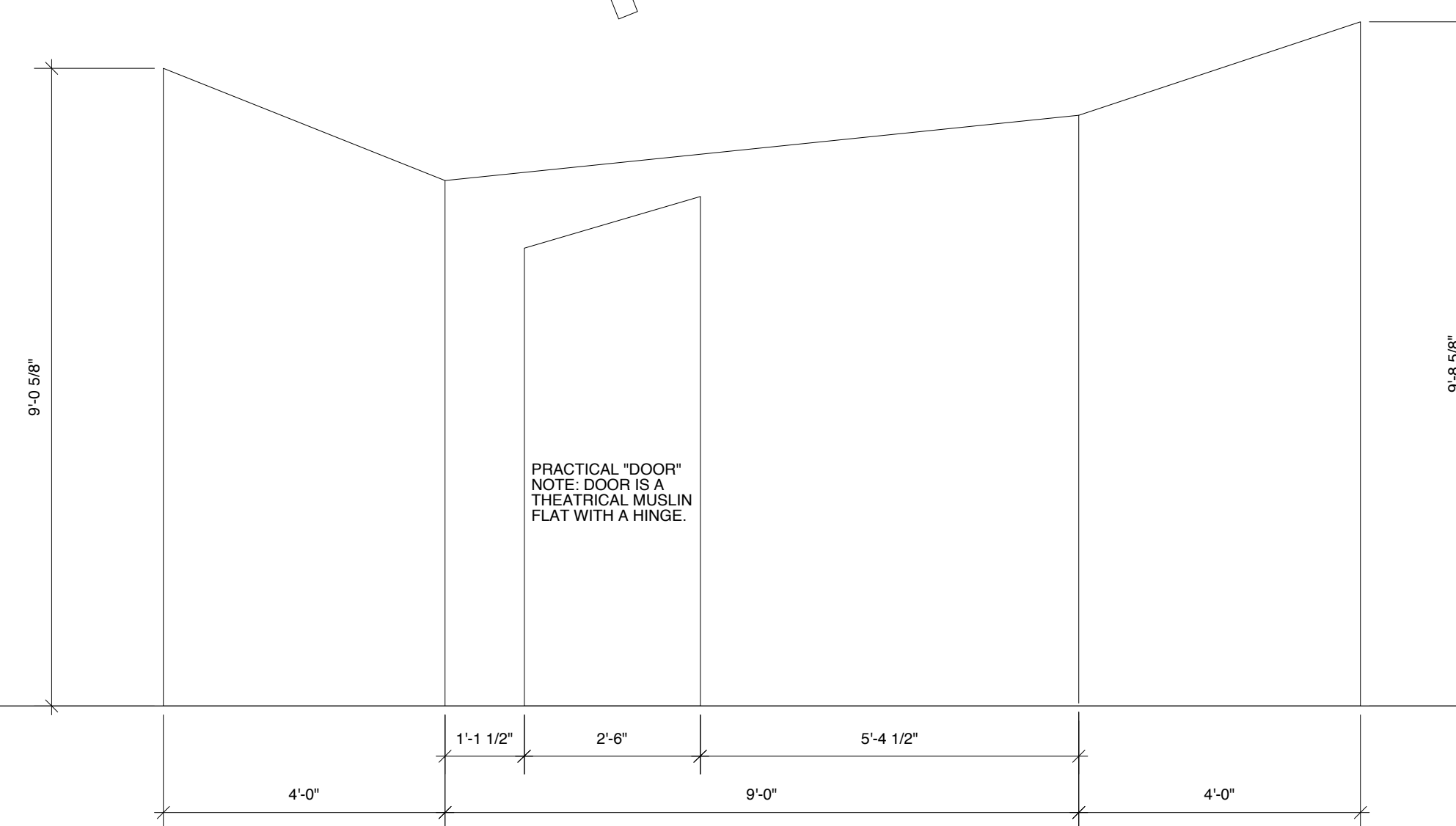
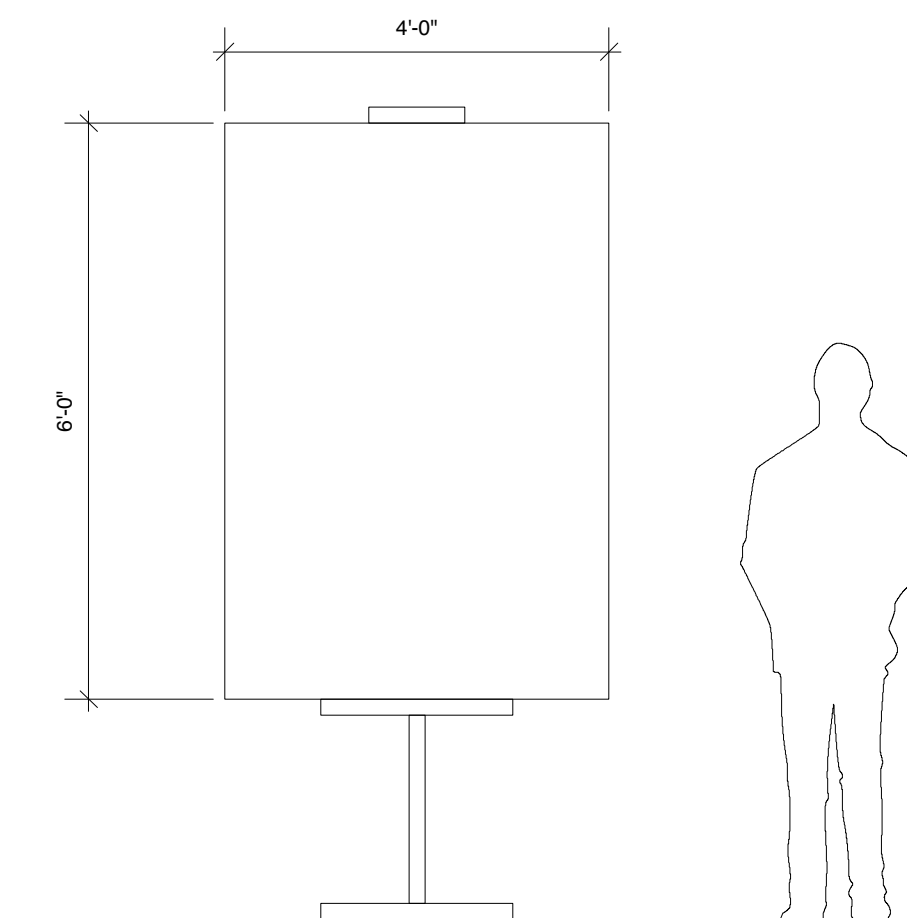
VAUDEVILLE SET

OLD-STYLE MUSLIN FRAMED THEATER FLATS HINGED TOGETHER.
 REPLICAS MOLE-RICHARDSON MICROPHONE BOOM FLIES IN.
 - PERHAPS ONLY THE "MIC" END OF THE BOOM FLIES IN SO WE CAN GET A SHARPER ANGLE.



"SHOW DROP"

PAINTED CANVAS ON EASEL.



FOR
 BID
 ONLY

DESIGN BY JONATHAN COLLINS 656 West 162nd Street #2C New York NY 10032 cell: 917-575-3640 jon@joncollins.com	DROP AND VAUDEVILLE UNIT		SHEET 9 9 of 9	
	THE SUNSHINE BOYS by NEIL SIMON			
	THE ENGEMAN THEATER DIRECTED BY BT MCNICHOL DESIGN BY JONATHAN COLLINS			
	SCALE: 1/2" = 1'-0"			
		DATE: DECEMBER 15, 2011		